



# **MediTECH™**

## **Medical Grade Plastics**

**Thermoplastic shapes for long-term  
orthopaedic implants**





# Corporate overview & capabilities

The Engineering Shapes & Solutions Division of Mitsubishi Chemical Group (MCG) is a leading global manufacturer of high-performance thermoplastic materials in the form of semi-finished products and finished parts. The Division has locations in 20 countries and more than 3,000 employees. Its specialty engineering thermoplastics and composites are superior in performance to metals and other materials and are used in a wide range of applications, primarily in the capital goods industry. The company is continuously developing new areas of applications in close cooperation with industry leaders in a broad variety of customer markets.

Supporting the vision of the parent company, Mitsubishi Chemical Group Corporation (MCGC) is committed to the realization of KAITEKI, a concept that proposes a way forward in the sustainable development of society and the planet, in addition to serving as a guide for solving environmental and social issues.

## Implantable products for today and tomorrow

Under the MediTECH™ brand, the Engineering Shapes & Solutions Division manufactures UHMW-PE implantable thermoplastic polymer shapes compliant to ASTM F648 and ISO 5834-2 and PEEK thermoplastic shapes compliant to ASTM F2026 for use in Class III implants (>30 days). Implantable polymers, like UHMW-PE and PEEK, can be used for orthopedic implant applications such as large joint orthopedics, spinal cages, bone screw, suture anchors, and cranio-maxillofacial (CMF) implants.

## Comprehensive R&D strategy

MCG's R&D strategy focuses on combining knowledge of the global regulatory landscape, industry segments, point of care research, and customer engagement. Once a need is identified, MCG can initiate a fast-track process of research, testing and support to validate application development. A fully integrated supply chain enables full collaboration with R&D, quality, manufacturing, and material development teams throughout the product development cycle, so customers experience a significant speed to market.

### **Regulatory management**

As a partner with healthcare OEM's for more than 30 years, MCG understands the stringent industry requirements designed to ensure biological safety and protect the public's health. MCG offers comprehensive regulatory management.

### **Global facilities, service & support**

With multiple manufacturing locations and global distribution, the MediTECH™ Implantable Polymers Division is uniquely positioned to meet increasing demands and supply assurance. The company's dedicated expert teams enable worldwide coordination while multi-national locations allow for high responsiveness and make it easier for customers to do business with the company.

### **Product quality**

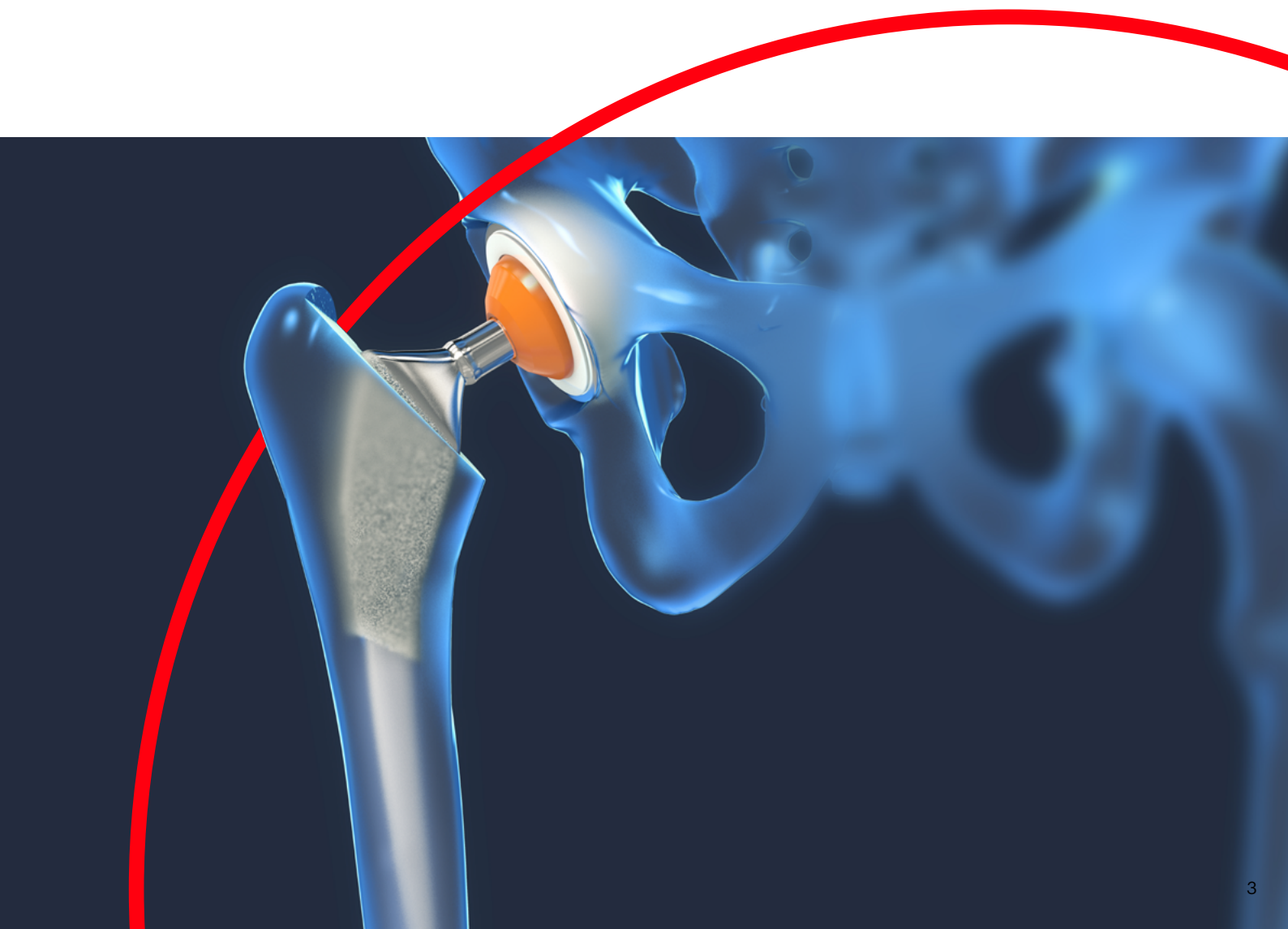
Superior products begin with superior raw materials. MCG uses certified resins that are compliant for use in surgical orthopaedic implant applications.

### **MCG's Engineering Shapes & Solutions Division has robust inspection procedures to produce thermoplastic shapes**

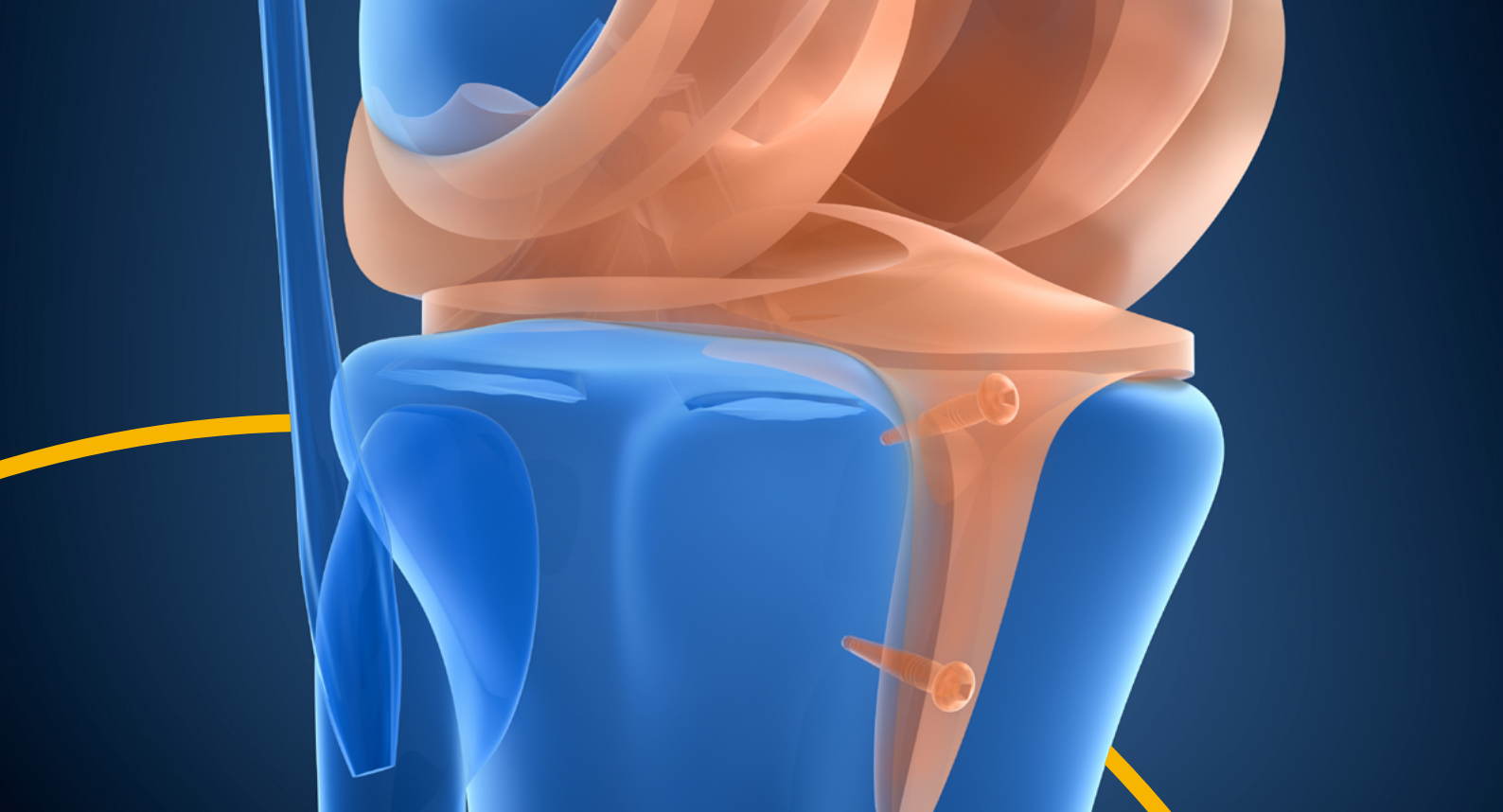
- Meet ASTM and ISO standards
- Proven regulatory compliance from global manufacturing facilities
- ISO 9001 and ISO 13485 certification
- ISO 17025 lab accreditation
- GMP compliant
- Validated processes
- Robust product traceability throughout manufacturing process

### **Testing capabilities to support product development**

A vital part of the MediTECH™ technology continues to be our state-of-the-art polymer research, analysis, and testing lab. Recent investments in the lab with specimen fabrication, testing equipment and capabilities position the MediTECH™ lab to be the solution provider for customer product testing needs, test method evaluation and development. The lab is ISO 17025 accredited, adding to the level of quality and service that the lab is capable to provide.







# Chirulen™ | Extrulen™ ultra-high molecular weight polyethylene (UHMW-PE)

## Overview

As a polyethylene with a very specialized molecular weight, UHMW-PE is produced as a powder that requires special processing. The MediTECH™ Implantable Polymers Division of Mitsubishi Chemical Group manufactures the resin as thermoplastic shapes to be used in orthopedic implants. Chirulen™ UHMW-PE is our compression molding grade and Extrulen™ UHMW-PE is processed by ram extrusion.

## UHMW-PE blended with vitamin E

Cross-linking by irradiation bears the risk of free radical formation in the UHMW-PE product and can result in vivo oxidation and material degradation. Such degradation can cause a loss in mechanical performance, including reduced wear resistance. Vitamin E, known as an antioxidant, has positive influence on this process and is used as a stabilizer for orthopedic UHMW-PE implants.

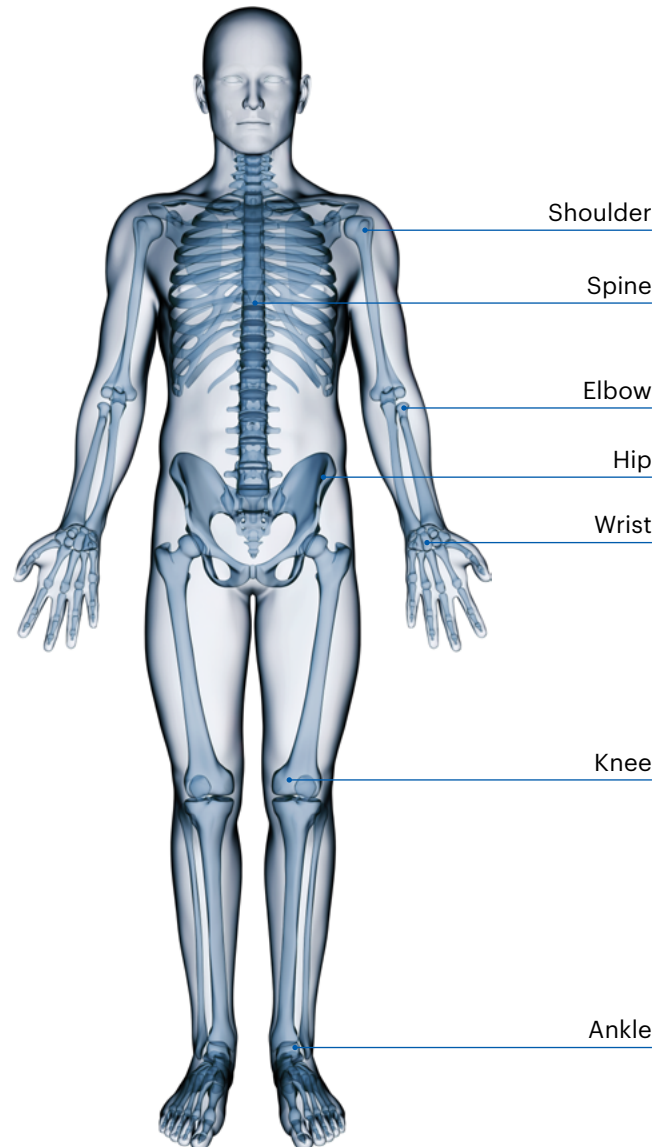
## Chirulen™ & Extrulen™ UHMW-PE Typical applications

### Expertise in cross-linking

Crosslinking of UHMW-PE products has demonstrated to increase the wear resistance of orthopedic implants. For example, the balance of wear and mechanical strength is affected by the level of crosslinking and is specified by the energy dose provided. MediTECH™ Division can supply products across the full span of irradiation levels to meet customer specific preferences. The crosslinking methods are also customizable with Gamma, E-Beam, and X-Ray potentials to meet customer requirements and application needs.

### UHMW-PE product benefits

- Exceptionally high notched impact strength
- High energy absorption capacity at high stress rate
- Excellent wear resistant properties
- Low coefficient of friction



### MediTECH Chirulen™ / Extrulen™ UHMW-PE thermoplastic shapes\*

- Chirulen™ compression molded 1020 & 1050
- Extrulen™ extruded 1020 & 1050
- Cross-linked
- Vitamin E stablized
- Vitamin E cross-linked
- Near net shapes available in multiple conversion technologies

\*Custom sizes are available

# Zeniva® PEEK (Polyetheretherketone)

## Overview

Zeniva® PEEK is a high-performance specialty polymer with high strength and advanced stiffness that offers extreme toughness and reliability for use in structural, load-bearing implantable medical devices. This bio-stable plastic has excellent fatigue and creep resistance. The unique properties of Zeniva® PEEK allow implantable devices to withstand continuous strain and repeat loading. In addition, it offers numerous advantages over metals, such as a reduction of stress shielding, no heavy metal allergy or ion erosion, and has radiolucent properties that allow X-ray and CT scanning procedures without interference.

## Solvay license agreement

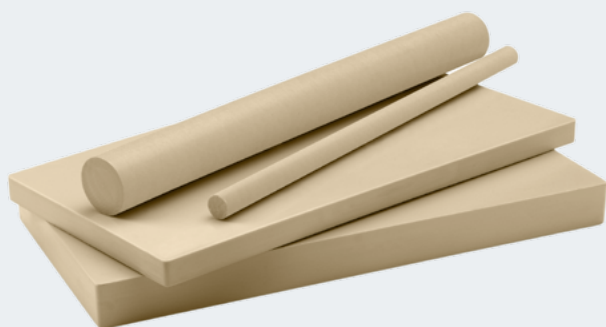
MCG is the exclusive global converter and supplier for Syensqo's Zeniva® PEEK thermoplastic shapes. This agreement expands MediTECH's existing role in the longstanding partnership between the two companies, with the goal of bringing additional value to the customer channel.

## Long-term implantation

Additional performance benefits of Zeniva® PEEK shapes include high strength and stiffness, fatigue resistance, and exceptional dimensional stability. Zeniva® PEEK shapes are ideal for the close tolerance machining of finished components, and for prototypes used in injection molding applications.

## Typical orthopedic implants

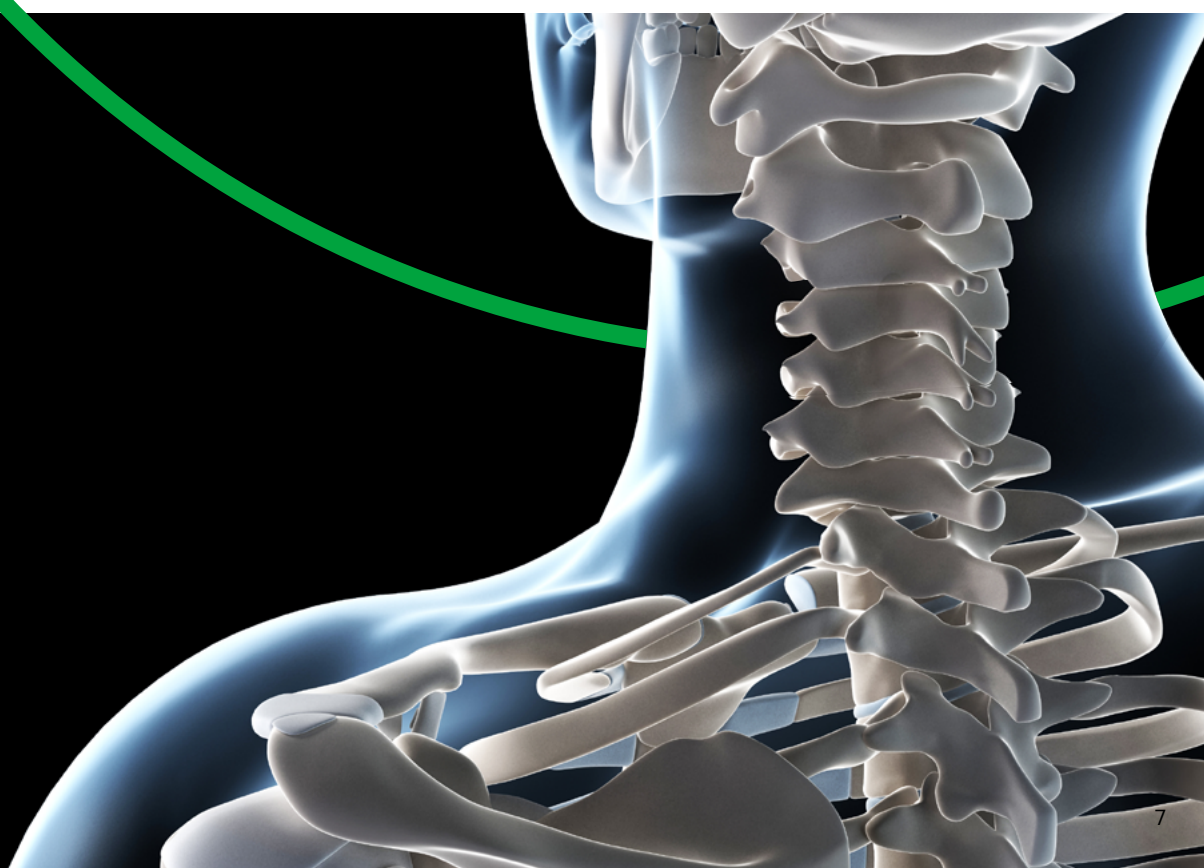
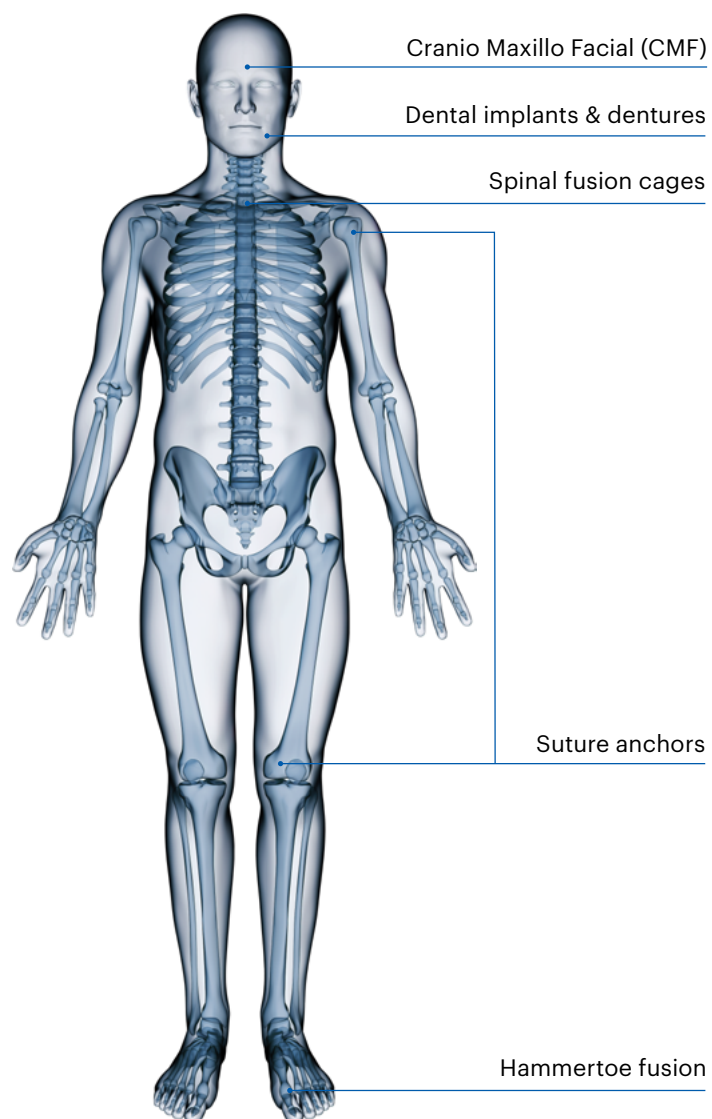
- Spinal - spinal cages and spacers for anterior and posterior lumbar interbody fusions
- Supports fixations in anterior and posterior cervical interbody fusions and disc height restoration
- Suture anchors and bone screws
- Dental
- Trauma and large joints



## MediTECH™ thermoplastic shapes made from Zeniva® PEEK - Size range

- ZA-500 Rods:  
80 mm, 70 mm, 60 mm, 50 mm, 40 mm,  
36 mm, 32 mm, 30 mm, 25 mm, 20 mm,  
16 mm, 13 mm, 9 mm, 6 mm
- ZA-500 Plates:  
15 x 150 x 400 mm  
40 x 500 x 1000 mm

## Zeniva® PEEK Typical applications



## Mitsubishi Chemical Advanced Materials AG

### General inquiries

For more information and if you have any questions, please contact the MediTECH™ team at:

meditech@mcgc.com  
mcam.com

### North America

Mitsubishi Chemical  
Advanced Materials Inc.

2710 American Way  
P.O. Box 9086  
Fort Wayne, IN 46809, USA  
Tel: +1 260 479 4100

### Europe

Mitsubishi Chemical  
Advanced Materials GmbH

Max-Planck-Strasse 11  
48691 Vreden, Germany  
Tel: +49 2564 301 116

### Asia-Pacific

Mitsubishi Chemical  
Advanced Materials China Ltd.

Room 3904, Building 1,  
Ganghui Center, 1 Hongqiao Road,  
Xuhui District, 20030 Shanghai, China  
Tel: +86 021 5835 8918

### South America

MCAM Brazil Ltd.

Rua Bragança Paulista, 252  
Bairro da Ponte  
12944-430 Atibaia SP, Brazil  
Tel: +55 11 2218 6200

All statements, technical information and recommendations contained in this publication are presented in good faith and are, as a rule, based upon tests and such tests are believed to be reliable and practical field experience. The reader, however, is cautioned, that Mitsubishi Chemical Advanced Materials does not guarantee the accuracy or completeness of this information.

It is the customer's responsibility to determine the suitability of Mitsubishi Chemical Advanced Materials' products in any given application.

MediTech™, Chirulen™ and Extrulen™ are registered trademarks of Mitsubishi Chemical Advanced Materials.  
Zeniva® is a registered trademark of Syensqo SA.

Design and content created by Mitsubishi Chemical Advanced Materials and protected by copyright law. Copyright © 2025 Mitsubishi Chemical Advanced Materials. All rights reserved.